

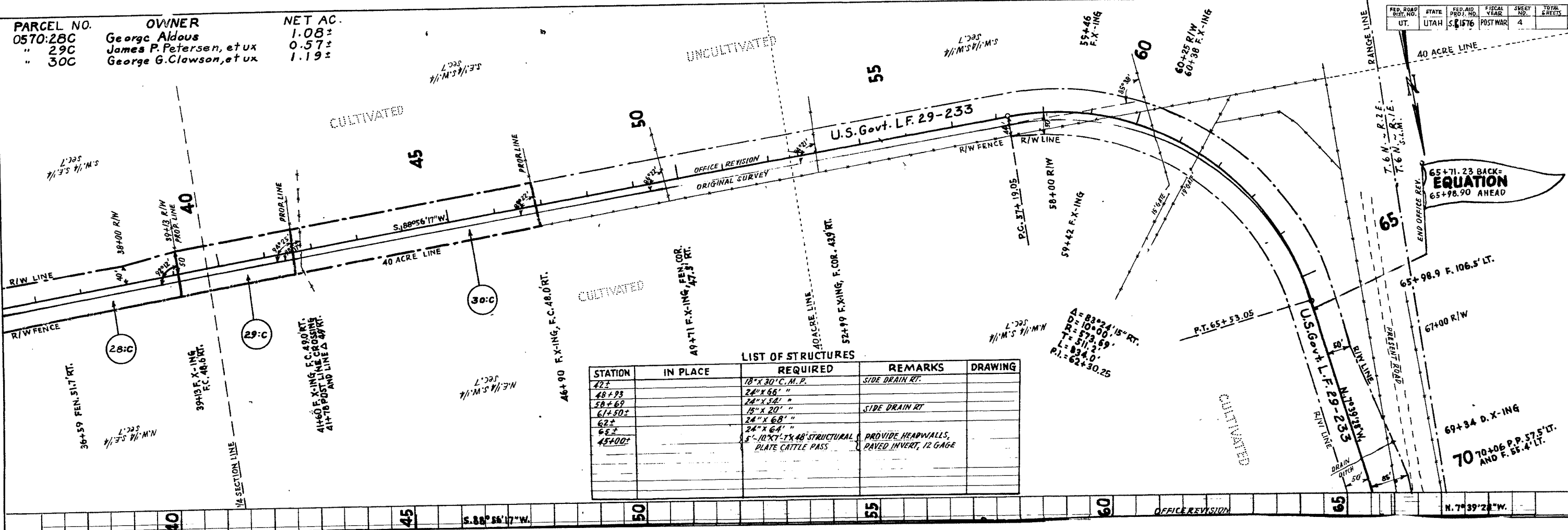
**PARCEL NO.**  
 0570:28C  
 " 29C  
 " 30C

**OWNER**  
 George Aldous  
 James P. Petersen, et ux  
 George G. Clawson, et ux

**NET AC.**  
 1.08±  
 0.57±  
 1.19±

FED. ROAD DIST. NO.	STATE	FED. AID PROJ. NO.	FISCAL YEAR	SHEET NO.	TOTAL SHEETS
UT.	UTAH	S. 1576	POSTWAR	4	

DATE	1/25/56
BY	B. L. KAY
CHECKED	
NO.	

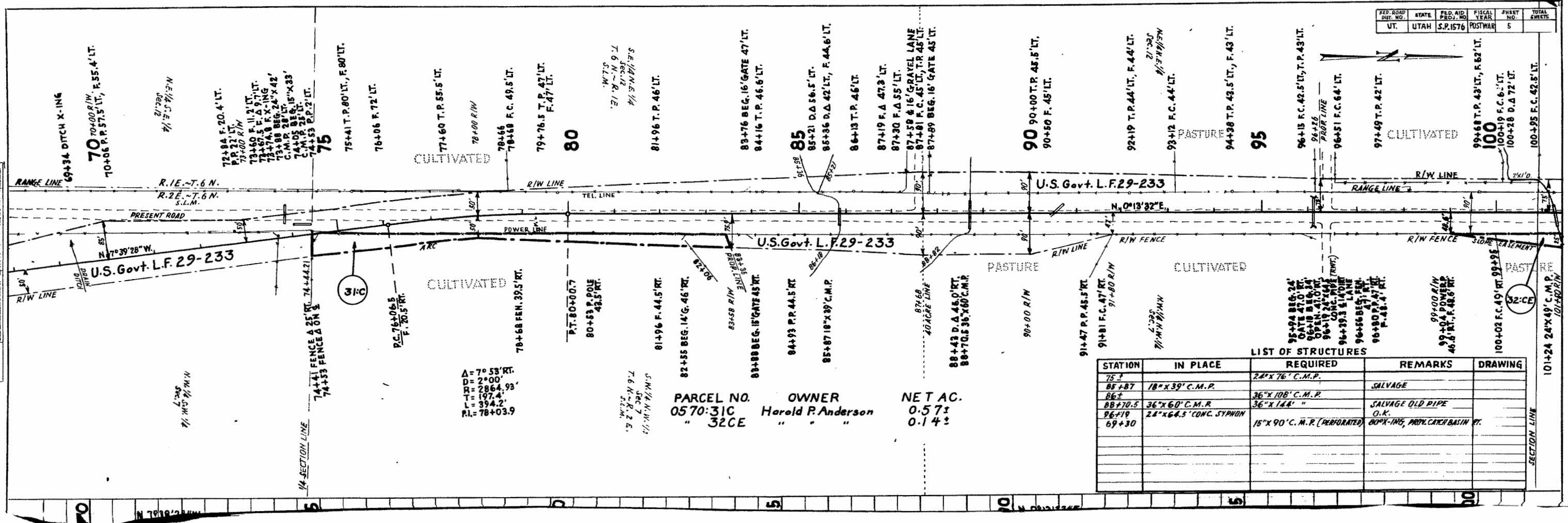


LIST OF STRUCTURES

STATION	IN PLACE	REQUIRED	REMARKS	DRAWING
22±		18" X 30" C.M.P.	SIDE DRAIN RT.	
48+93		24" X 66"		
58+69		24" X 58"		
61+50±		15" X 20"	SIDE DRAIN RT.	
62±		24" X 68"		
62±		24" X 64"		
45+00±		5'-10" X 7'-1" X 48" STRUCTURAL PLATE CATTLE PASS	PROVIDE HEADWALLS, PAVED INVERT, 12 GAGE	

OFFICE REVISION

PLAN	SHOWED	DATE
NOTE BOOK	BY	2/26
	BY	
	BY	
	BY	
	BY	



FED. ROAD DIST. NO.	STATE	FED. AID PROJ. NO.	FISCAL YEAR	SHEET NO.	TOTAL SHEETS
UT.	UTAH	S.P. 1576	POSTWAR	5	

PARCEL NO. 0570:31C OWNER Harold P. Anderson NET AC. 0.57±  
 " 32CE " " " 0.14±

STATION	IN PLACE	REQUIRED	REMARKS	DRAWING
75±		24" X 76' C.M.P.		
85+87	18" X 39' C.M.P.		SALVAGE	
86±		36" X 108' C.M.P.		
88+70.5	36" X 60' C.M.P.	36" X 144' "	SALVAGE OLD PIPE	
96+19	24" X 66.5' CONC. SYPHON		O.K.	
69+30		15" X 90' C.M.P. (PERFORATED)	BOXP-ING, PROT. CATCH BASIN ET.	

A = 7° 53' RT.  
 D = 2' 00'  
 R = 2864.93'  
 L = 197.4'  
 P.I. = 78+03.9

S. 1/4 N. 1/4 N. 1/4 S. 1/4 T. 6 N. R. 1 E. S. 1/4 M.

S. 1/4 N. 1/4 N. 1/4 S. 1/4 T. 6 N. R. 1 E. S. 1/4 M.

SECTION LINE